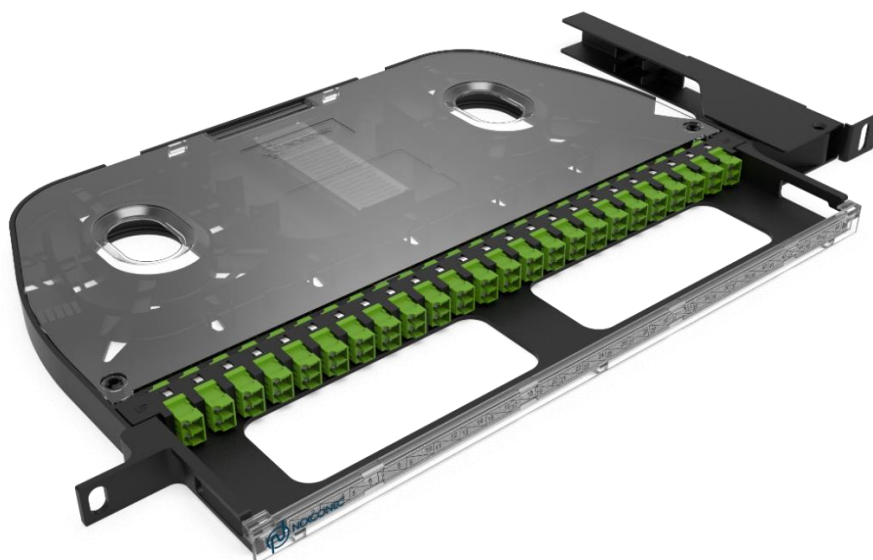


## 0.5U 24 PORTS SC SX/LC DX PIVOT PATCH PANEL – PIV00



Browse on Mobile

 Browse on Web

NEXCONEC<sup>®</sup> 0.5U Pivot Patch Panel is an innovative, high density pivot panel designed to accept 24 SC Simplex/LC Duplex adapters in ½ RU tray (**Up to 48FO in LC**). The tray effectively manages the incoming fibers, pigtails and splices. Offers pivoting up to 120° to ensure easy access during installation or rework without any interference with the existing cable or fibers.

The exceptional panel layout consists of a removable transparent lid and a see-through hinged door that promotes effortless access, simplifying labeling and maintenance tasks. Incorporated ventilation pathways within the panel guarantee uninterrupted airflow, facilitating an outstanding cooling system for the active equipment with superior efficiency.

The pivot panel can be pre-loaded completely with the required adapters and pigtails.

### FEATURES

- ✓ ½ RU super high-density design
- ✓ Up to 48FO in LC on ½ RU
- ✓ Accepts loose tube, distribution and pre-terminated cables
- ✓ Standard 19" or 21" Rack mounting type
- ✓ High durability & light weight PC & PC+ABS material
- ✓ Transparent lid for easier maintenance and verification
- ✓ Enhanced labelling on the front door providing patch cords protection and better identification
- ✓ Available in shuttered dust proof LC/SC adapters
- ✓ Simple and easy installation with integrated fiber routing
- ✓ Right or Left Hinged Swing-out

## APPLICATIONS

- ✓ Datacenter storage area & Central office, POP
- ✓ Fiber to the home (FTTH)
- ✓ Ethernet, Fiber Channel, ATM, LAN, MAN and WAN
- ✓ Data communication and Telecommunication networks

## SPECIFICATIONS

Parameters	Value
<b>Mounting Type</b>	Rack 19" or 21"
<b>Opening Type</b>	Right or Left Hinge Swing-out - 120° degrees
<b>Access Type</b>	Front and Side access
<b>Front Cable Management</b>	Front manager with Hinged transparent drop-down door
<b>Cable Entry Direction</b>	Side Cable Entry
<b>Side Cable Management</b>	Supports up to 4 tubes of 5mm
<b>Slot Type</b>	SC Simplex/ LC Duplex Footprint
<b>Number of Ports</b>	24 Ports
<b>Fiber Capacity</b>	24FO in SC, 48FO in LC
<b>Splicing</b>	2x Splice Holder for 40/60mm Heat Shrink Splice Protectors <i>* Also Available in Ribbon Splice and Mechanical ANT Splice Protectors</i>
<b>Accessories</b>	Included in package: 1x Cage Nuts & Screws
<b>Height Unit</b>	0.5U (½ RU)
<b>Dimensions (W x D x H in MM)</b>	482 x 275 x 22 mm
<b>Material</b>	PC & PC+ABS
<b>Housing Color</b>	Black or Grey (RAL 7035)
<b>Compliance</b>	RoHS, REACH SvHC
<b>Application</b>	Indoor IP20
<b>Lockable</b>	No
<b>Net Weight</b>	1 Kg

## ORDER INFORMATION

Part Number	Product Description
<b>PIV00R</b>	0.5U 24 Ports SC Simplex/LC Duplex Pivot Patch Panel (Right Side Bracket)
<b>PIV00L</b>	0.5U 24 Ports SC Simplex/LC Duplex Pivot Patch Panel (Left Side Bracket)

## CUSTOM PANEL KIT CONFIGURATOR

Panel Type	1	2	3	4
------------	---	---	---	---

Panel Type	1	Adapter Type	2	Adapter Count	3	Pigtails Type	4	Pigtails Loading Type		
<b>PIV00R</b>	<b>LL</b>	LC DX Blue	-	None	-	No Pigtails	-	Tight Buffer	-	FOTAG EIA/TIA 598 (1 Blue/ 2 Orange etc.)
<b>PIV00L</b>	<b>LN</b>	LC DX Green	<b>24</b>	24 Adapters	<b>S1A1</b>	SC/UPC SMF OS2	<b>E</b>	Easystrip	<b>FT</b>	France Telecom (1 Red, 2 Blue, etc.)
	<b>SL</b>	SC SX Blue			<b>S2A1</b>	SC/APC SMF OS2			<b>PK</b>	Included in pack, Uninstalled
	<b>SN</b>	SC SX Green			<b>L1A1</b>	LC/UPC SMF OS2				
					<b>L2A1</b>	LC/APC SMF OS2				

\*Ask sales for other products and configuration not shown. [sales@nexconec.com](mailto:sales@nexconec.com)

TECHNICAL DRAWING

