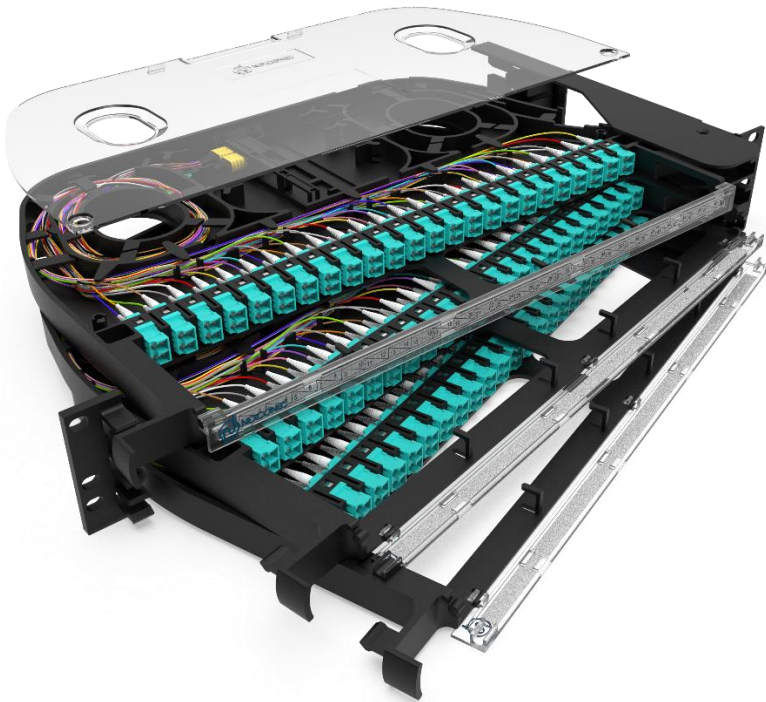


1.5U MTP[®]/MPO (BASE-24) - LC PIVOT PATCH PANEL – PIVM07Xx



Browse on Mobile

 Browse on Web

NEXCONEC[®] 1.5U MTP[®]/MPO (Base-24) to LC breakout pivot patch panel offers an expandable deployment for implementations in 100G networks, in the meantime providing greater protection to the installed patch cords in main, horizontal and equipment area of data center. Each tray can populate up to **144FO in LC** and offers individual pivoting up to 120° to ensure easy access during installation or rework without any interference with the existing cable or fibers.

The remarkable panel design includes a detachable see-through lid and a transparent hinged drop-down door to ensure easy access, simplifies labelling and maintenance routines. Ventilation tracts within the panel enable constant airflow, facilitating optimal cooling for the active equipment with utmost efficiency.

FEATURES

- ✓ 1.5U overall with ½ RU individual trays
- ✓ Up to 144FO in LC on 1.5U Space
- ✓ Standard 19" or 21" Rack mounting type
- ✓ High durability & light weight PC & PC+Fiber Glass material
- ✓ Transparent lid for easier maintenance and verification
- ✓ Enhanced labelling on the front door providing patch cords protection and better identification
- ✓ Available in shuttered dust proof LC adapters
- ✓ Available in standard SM and MM options
- ✓ Simple and easy installation with integrated fiber routing
- ✓ Right or Left Hinged Swing-out

APPLICATIONS

- ✓ Indoor Applications
- ✓ Datacenter & Enterprise network
- ✓ Ethernet, Fiber Channel, ATM, LAN, MAN and WAN
- ✓ Data communication and Telecommunication networks

PANEL SPECIFICATIONS

| Parameters | Value |
|-------------------------------------|--|
| Mounting Type | Rack 19" or 21" |
| Opening Type | Right or Left Hinge Swing-out - 120° degrees |
| Access Type | Front and Side access |
| Front Cable Management | Front manager with Hinged transparent drop-down door |
| Cable Entry Direction | Side Cable Entry Left or Right |
| Side Cable Management | Each tray supports up to 6 MPO Trunks of 3mm |
| Front Adapter Type | LC Duplex Footprint |
| Number of LC Adapters | 72 Ports [3x (24 each ½ RU tray)] |
| Inside Adapter Type | MTP®/MPO Base-24 Male (Pinned) |
| Number of MTP®/MPO Adapters | 6 Ports [3x (2 each ½ RU tray)] for LC Configuration |
| Fiber Capacity | 144FO in LC |
| Height Unit | 1.5U |
| Dimensions (W x D x H in MM) | 421.5 x 265.1 x 65.5 mm |
| Material | PC & PC + Fiber Glass (20%) |
| Housing Color | Black or Grey (RAL 7035) |
| Compliance | RoHS, REACH SvHC |
| Application | Indoor IP20 |
| Lockable | No |
| Net Weight | 3.5 Kg |

MPO-LC FANOUT SPECIFICATIONS

| Parameters | Units | SM MPO | SM LC | MM MPO | MM LC |
|-----------------------|-------|-------------|-------------|-------------|-------------|
| Avg/Max IL – Standard | dB | ≤ 0.25/0.75 | ≤ 0.20/0.30 | ≤ 0.60 | ≤ 0.18/0.30 |
| Return Loss (PC/APC) | dB | ≥ 60 | ≥ 60/65 | NA | NA |
| Avg/Max IL– Premium | dB | ≤ 0.10/0.35 | ≤ 0.12/0.15 | ≤ 0.10/0.35 | ≤ 0.12/0.15 |
| Return Loss (PC/APC) | dB | ≥ 60 | ≥ 60/65 | NA | NA |

ORDER INFORMATION

| Part Number | Product Description |
|-----------------|--|
| PIVM07XR | 1.5U 144FO Pivot Patch Panel, 6x MPO(Male) Elite (Base-24) - LC Duplex SM OS2 (100G-10G) Right Bracket |
| PIVM07XL | 1.5U 144FO Pivot Patch Panel, 6x MPO(Male) Elite (Base-24) - LC Duplex SM OS2 (100G-10G) Left Bracket |
| PIVM08XR | 1.5U 144FO Pivot Patch Panel, 6x MPO(Male) Elite (Base-24) - LC/APC Duplex SM OS2 (100G-10G) Right Bracket |
| PIVM08XL | 1.5U 144FO Pivot Patch Panel, 6x MPO(Male) Elite (Base-24) - LC/APC Duplex SM OS2 (100G-10G) Left Bracket |
| PIVM09XR | 1.5U 144FO Pivot Patch Panel, 6x MPO(Male) Elite (Base-24) - LC Duplex MM OM3/OM4 (100G-10G) Right Bracket |
| PIVM09XL | 1.5U 144FO Pivot Patch Panel, 6x MPO(Male) Elite (Base-24) - LC Duplex MM OM3/OM4 (100G-10G) Left Bracket |

* Add 'G' at the end of the Part Number for Telecom panels in Grey color. (Example: PIVM07XR^G, PIVM07XL^G)

TECHNICAL DRAWING

