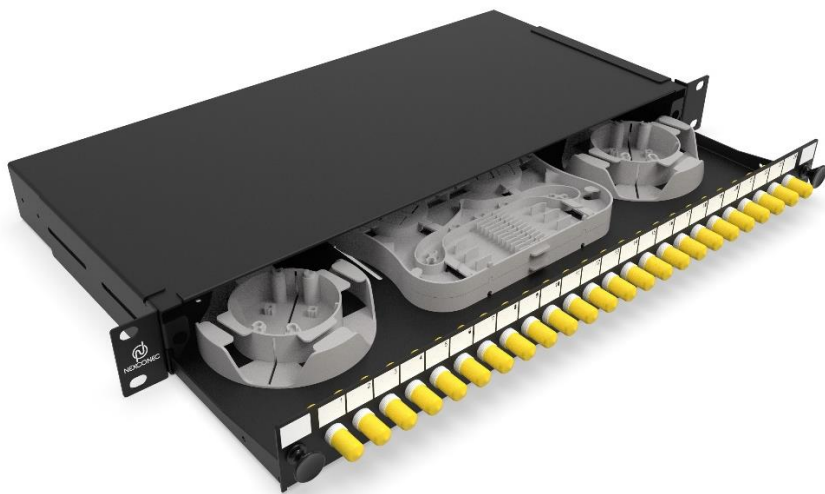


1U 24 PORTS FC/ST SLIDING PATCH PANEL - SPP24F



 [Browse on Web](#)

Nexconec sliding patch panel accepts 24 adapters FC or ST within 1U space. The panel can be pre-loaded completely with the required adapters or pre-loaded with pigtails and splice accessories. The tray is locked by 2 plastic latches and lowers to a 45deg angle when fully extended. Installation and labelling are simple and easy.

FEATURES

- ✓ Recessed panel bracket mounting
- ✓ Up to 24FO in 1U space
- ✓ Fits standard 19" rack
- ✓ 4 Rear Cable entries

APPLICATIONS

- ✓ Enterprise network & Datacenter
- ✓ Indoor application
- ✓ Accepts Indoor and Outdoor Pre-terminated cables and conventional Splicing

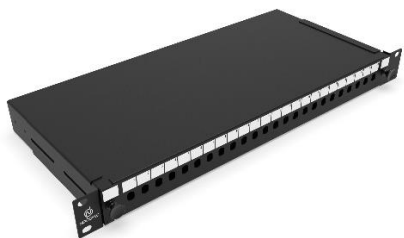
SPECIFICATION

Mounting Type	Rack 19"
Height Unit	1U
Material	Cold rolled steel
Housing Color	Black
Application	Indoor IP20
Lockable	No
Dimensions (W x D x H in MM)	482 x 205 x 44.4
Net Weight	2.5 Kg

DESIGN - HARDWARE

Opening Type	Sliding Tray
Access Type	Front access
Front Cable Management	Optional
Cable Entry Direction	Rear
Rear Cable Management	4 Cable Entries (OD: 2x PG13.5 and 2x PG16 mm)
Slot Type	FC/ST
Number of Slots	24
Fiber Capacity	24

ORDER INFORMATION

Product	Part Number	Product Description
	SPP24F	1U 24 Ports FC/ST Sliding Patch Panel Unloaded

CUSTOM PANEL KIT CONFIGURATOR

SPP24F	1	2	3	4
--------	---	---	---	---

SPP24F	1	Adapter Type	2	Fiber Count	3	Adapter Type	4	Pigtails
	F1	FC	6	6FO	L	Single mode	-	No Pigtails / Leave blank
	F2	FC/APC	12	12FO	N	Multimode	A1	SM OS2 G657A1
	T1	ST	24	24FO			O1	MM OM1
							O3	MM OM3
							O4	MM OM4

- Panels KIT include Splice Kit (Splice Tray FSP01, Spool FSP02 and Cable Gland)
- Pigtails Tight Buffer Rainbow colored per default. Add E after pigtails for **Easy strip**, Example A1E
- Ask sales for other products and configuration not shown. sales@nexconec.com