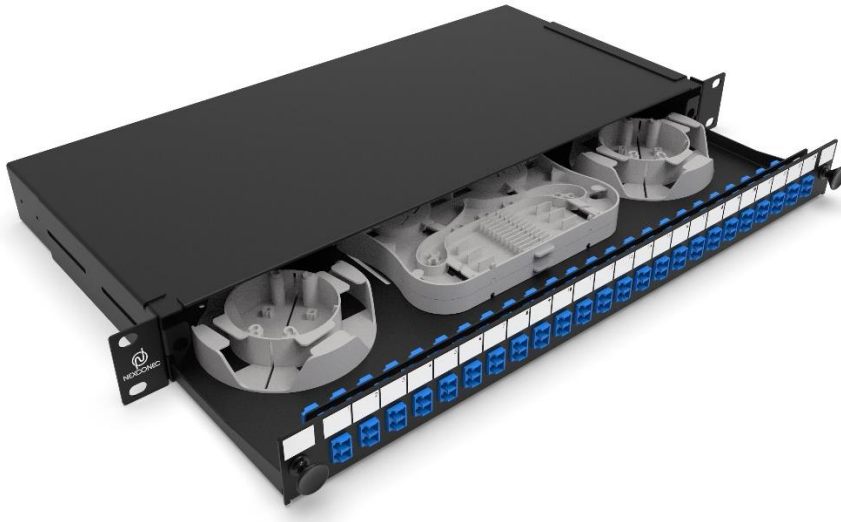


1U 24 PORTS SC SX/LC DX SLIDING PATCH PANEL - SPP24S



Browse on Mobile

 [Browse on Web](#)

Nexconec sliding patch panel accepts 24 adapters SC Simplex or LC Duplex within 1U space. The panel can be pre-loaded completely with the required adapters or pre-loaded with pigtails and splice accessories. The tray is locked by 2 plastic latches and lowers to a 45deg angle when fully extended. Installation and labelling are simple and easy.

FEATURES

- ✓ Recessed panel bracket mounting
- ✓ Up to 48FO in 1U space
- ✓ Fits standard 19" rack
- ✓ 4 Rear Cable entries

APPLICATIONS

- ✓ Enterprise network & Datacenter
- ✓ Indoor application
- ✓ Accepts Indoor and Outdoor Pre-terminated cables and conventional Splicing

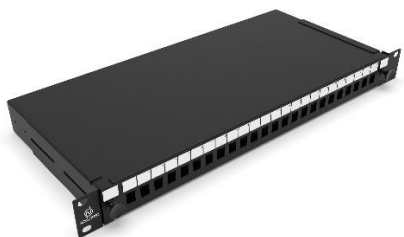
SPECIFICATION

Mounting Type	Rack 19"
Height Unit	1U
Material	Cold rolled steel
Housing Color	Black
Application	Indoor IP20
Lockable	No
Dimensions (W x D x H in MM)	482 x 205 x 44.4
Net Weight	2.5 Kg

DESIGN - HARDWARE

Opening Type	Sliding Tray
Access Type	Front access
Front Cable Management	Optional
Cable Entry Direction	Rear
Rear Cable Management	4 Cable Entries (OD: 2x PG13.5 and 2x PG16 mm)
Slot Type	SC Simplex Footprint
Number of Slots	24
Fiber Capacity	24 with SC, 48 with LC

ORDER INFORMATION

Product	Part Number	Product Description
	SPP24S	1U 24 Ports SC Simplex Sliding Patch Panel Unloaded

CUSTOM PANEL KIT CONFIGURATOR

SPP24S	1	2	3	4
---------------	----------	----------	----------	----------

SPP24S	1	Adapter Type	2	Fiber Count	3	Adapter Color	4	Pigtails
	S1	SC	12	12FO	L	Blue	-	No Pigtails / Leave blank
	S2	SC/APC	24	24FO	N	Green	A1	SM OS2 G657A1
	L1	LC	48	48FO	E	Beige	O1	MM OM1
	L2	LC/APC		*48 For LC	Q	Aqua	O3	MM OM3
	E1	E2000			V	Erika Violet	O4	MM OM4
	E2	E2000A						

- Panels KIT include Splice Kit (Splice Tray FSP01, Spool FSP02, Cable Gland)
- Pigtails Tight Buffer Rainbow colored per default. Add E after pigtails for **Easy strip**, Example A1E
- Ask sales for other products and configuration not shown. sales@nexconec.com