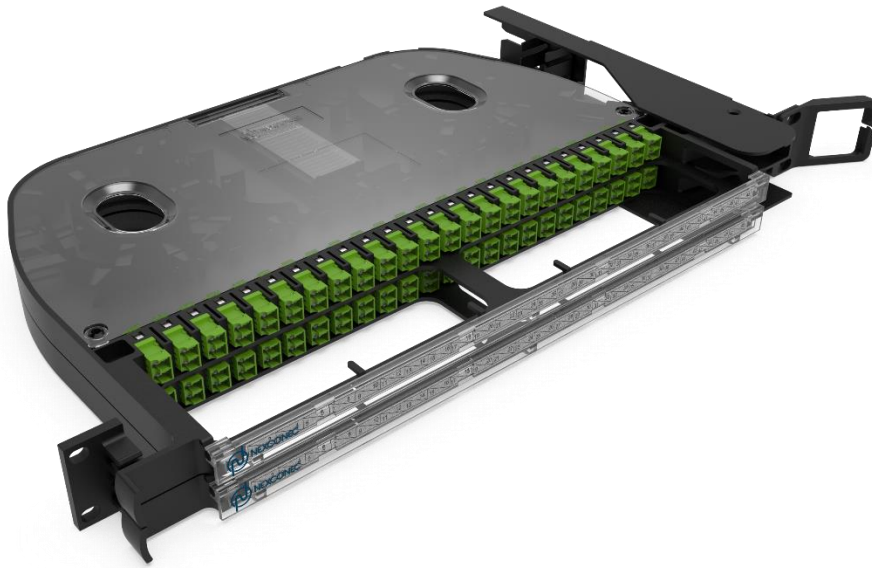


## 1U 48 PORTS SC SX/LC DX PIVOT PATCH PANEL – PIV01



Browse on Mobile

 Browse on Web

NEXCONEC<sup>®</sup> 1U Pivot Patch Panel is an innovative, high density pivot panel designed to accept 24 SC Simplex/LC Duplex adapters in each of two ½ RU trays within 1U space (**Up to 96FO in LC**). Each tray effectively manages the incoming fibers, pigtails and splices. Each tray offers individual pivoting up to 120° to ensure easy access during installation or rework without any interference with the existing cable or fibers.

The remarkable panel design includes a detachable see-through lid and a transparent hinged drop-down door to ensure easy access, simplifies labelling and maintenance routines. Ventilation tracts within the panel enable constant airflow, facilitating optimal cooling for the active equipment with utmost efficiency.

The pivot panel can be pre-loaded completely with the required adapters and pigtails.

### FEATURES

- ✓ 1U overall with ½ RU individual trays
- ✓ Up to 96FO in LC on 1U
- ✓ Accepts loose tube, distribution and pre-terminated cables
- ✓ Standard 19" or 21" Rack mounting type
- ✓ High durability & light weight PC & PC+ABS material
- ✓ Transparent lid for easier maintenance and verification
- ✓ Enhanced labelling on the front door providing patch cords protection and better identification
- ✓ Available in shuttered dust proof LC/SC adapters
- ✓ Simple and easy installation with integrated fiber routing
- ✓ Right or Left Hinged Swing-out

## APPLICATIONS

- ✓ Datacenter storage area & Central office, POP
- ✓ Fiber to the home (FTTH)
- ✓ Ethernet, Fiber Channel, ATM, LAN, MAN and WAN
- ✓ Data communication and Telecommunication networks

## PANEL SPECIFICATIONS

Parameters	Value
<b>Mounting Type</b>	Rack 19" or 21"
<b>Opening Type</b>	Right or Left Hinge Swing-out - 120° degrees
<b>Access Type</b>	Front and Side access
<b>Front Cable Management</b>	Front manager with Hinged transparent drop-down door
<b>Cable Entry Direction</b>	Side Cable Entry
<b>Side Cable Management</b>	Each tray supports up to 4 tubes of 5mm
<b>Slot Type</b>	SC Simplex/ LC Duplex Footprint
<b>Number of Ports</b>	48 Ports [2x (24 each ½ RU tray)]
<b>Fiber Capacity</b>	48FO in SC, 96FO in LC
<b>Splicing</b>	4x Splice Holder for 40/60mm Heat Shrink Splice Protectors <i>* Also Available in Ribbon Splice and Mechanical ANT Splice Protectors</i>
<b>Accessories</b>	Included in package: 4x Cage Nuts & Screws, 1x Side Cable Manager
<b>Height Unit</b>	1U
<b>Dimensions (W x D x H in MM)</b>	421.5 x 265.1 x 43.5 mm
<b>Material</b>	PC & PC + Fiber Glass (20%)
<b>Housing Color</b>	Black or Grey (RAL 7035)
<b>Compliance</b>	RoHS, REACH SvHC
<b>Application</b>	Indoor IP20
<b>Lockable</b>	No
<b>Net Weight</b>	2 Kg

**PIGTAIL SPECIFICATIONS (SINGLE FERRULE CONNECTOR)**

Parameters	IL – Max	IL – Typical	RL (PC/APC)
SM – Standard	≤ 0.30 dB	≤ 0.20 dB	> 55/65 dB
SM – Premium	≤ 0.15 dB	≤ 0.12 dB	> 55/65 dB
MM – Standard	≤ 0.30 dB	≤ 0.18 dB	> 28 dB
MM – Premium	≤ 0.15 dB	≤ 0.08 dB	> 28 dB

**PIGTAIL BUFFER CHARACTERISTICS**

Parameters	Unit	Value (Simplex)
Nominal Buffer Diameter	μm	900 +50/-50
Crush Resistance	N/100mm	500
Maximum Tensile Load	N	6
Minimum Bending Radius	mm	15
Operating Temperature	°C	-20 ~ +60

**ORDER INFORMATION**

Part Number	Product Description
<b>PIV01R</b>	1U 48 Ports SC Simplex/LC Duplex Pivot Patch Panel (Right Side Bracket)
<b>PIV01L</b>	1U 48 Ports SC Simplex/LC Duplex Pivot Patch Panel (Left Side Bracket)

\* Add 'G' at the end of the Part Number for Telecom panels in Grey color. (Example: PIV01R**G** or PIV01L**G**)

## CUSTOM PANEL KIT CONFIGURATOR

Panel Type	1	2	3	4
------------	---	---	---	---

Panel Type	1	Adapter Type	2	Adapter Count	3	Pigtails Type	4	Pigtails Loading Type		
<b>PIV01R</b>	<b>LL</b>	LC DX Blue	-	None	-	No Pigtails	-	Tight Buffer	-	FOTAG EIA/TIA 598 (1 Blue/ 2 Orange etc.)
<b>PIV01L</b>	<b>LN</b>	LC DX Green	<b>48</b>	48 Adapters	<b>S1A1</b>	SC/UPC SMF OS2	<b>E</b>	Easystrip	<b>FT</b>	France Telecom (1 Red, 2 Blue, etc.)
	<b>SL</b>	SC SX Blue			<b>S2A1</b>	SC/APC SMF OS2			<b>PK</b>	Included in pack, Uninstalled
	<b>SN</b>	SC SX Green			<b>L1A1</b>	LC/UPC SMF OS2				
					<b>L2A1</b>	LC/APC SMF OS2				

\*Ask sales for other products and configuration not shown. [sales@nexconec.com](mailto:sales@nexconec.com)

## TECHNICAL DRAWING

