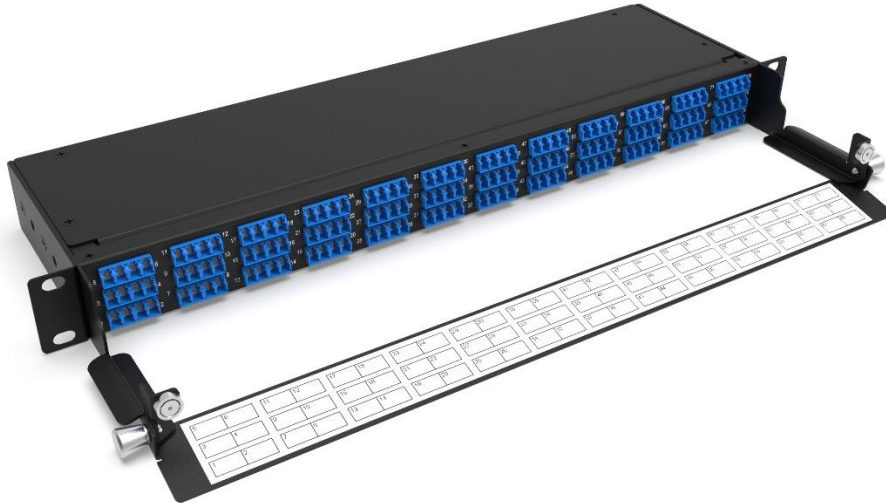


1U MPO-LC HIGH DENSITY BREAKOUT PATCH PANEL – PxxMOLCS



Browse on Mobile

 Browse on Web

Nexconec High Density MTP/MPO to LC breakout Patch Panel offers an expandable deployment, for implementations in 40G/100G networks, in the meantime, providing greater protection to the installed patch cords in main, horizontal and equipment area of data center. Up to 144 Fibers in only 1U space.

FEATURES

- ✓ Standard 19" size, can be rack-mounted
- ✓ Available in standard SM and MM options
- ✓ Available with Elite MPO and premium LC connector only
- ✓ RoHS, Reach and SvHC compliant
- ✓ Compliant with IEC, TIA/EIA standards

APPLICATIONS

- ✓ Datacenter & Enterprise network
- ✓ Indoor application
- ✓ Telecommunication central office

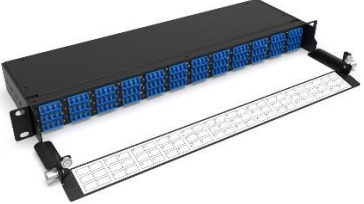
SPECIFICATIONS

Parameter	Value
Material	Metal cold rolled with black powder coating
Max Fiber Capacity	144F MPO-LC in 1U
Dimension	490 x 303 x 44mm
Net Weight	2.94 Kg
Gross Weight	3.14 Kg
Insertion loss – MPO(male) Elite	SM – 0.35 dB; MM – 0.35 dB
Insertion loss – LC premium	SM – 0.15 dB; MM – 0.15 dB
Return Loss – MPO(male) Elite	SM >60 dB; MM – NA
Return loss – LC premium	SM (PC/APC) >55/65 dB; MM – NA

DESIGN - HARDWARE

Opening Type	Fixed
Access Type	Front access
Front Cable Management	Removable hinged door
Cable Entry Direction	Rear
Rear Cable Management	Support bar
Front Adapter Type	LC Duplex
Rear Adapter Type	MTP/MPO-12 Male (pinned)
Fiber Capacity	Up to 144 in LC
Fiber Mapping	Polarity A

ORDER INFORMATION

Product	Part Number	Product Description
	P72MOLCS	1U HD PANEL 6xMPO(M) ELITE-LC 72FO SM G657A1
	P72MOLCM	1U HD PANEL 6xMPO(M) ELITE-LC 72FO Multimode OM3/OM4, Pol A/C Base-12
	P96MOLCS	1U HD PANEL 8xMPO(M) ELITE-LC 96FO SM G657A1
	P96MOLCM	1U HD PANEL 8xMPO(M) ELITE-LC 96FO Multimode OM3/OM4, Pol A/C Base-12
	P144MOLCS	1U HD PANEL 12xMPO(M) ELITE-LC 144FO SM G657A1
	P144MOLCM	1U HD PANEL 12xMPO(M) ELITE-LC 144FO Multimode OM3/OM4, Pol A/C Base-12

TECHNICAL DRAWINGS

