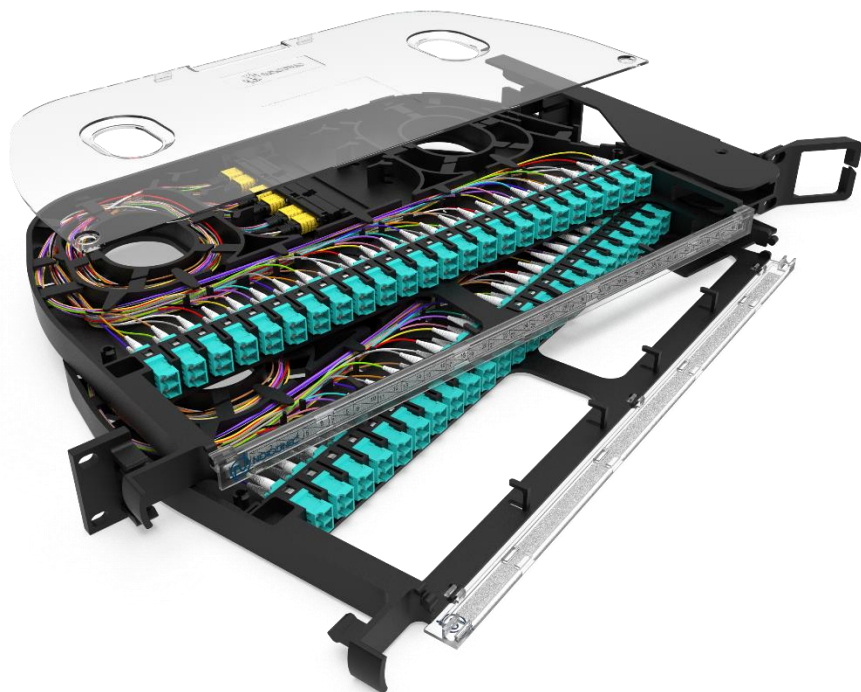


## 1U MTP<sup>®</sup>/MPO (BASE-8) - LC PIVOT PATCH PANEL – PIVM01Qx



Browse on Mobile

 Browse on Web

NEXCONEC<sup>®</sup> 1U MTP<sup>®</sup>/MPO (Base-8) to LC breakout pivot patch panel offers an expandable deployment for implementations in 40G networks, in the meantime providing greater protection to the installed patch cords in main, horizontal and equipment area of data center. Each tray can populate up to **96FO in LC** and offers individual pivoting up to 120° to ensure easy access during installation or rework without any interference with the existing cable or fibers.

The remarkable panel design includes a detachable see-through lid and a transparent hinged drop-down door to ensure easy access, simplifies labelling and maintenance routines. Ventilation tracts within the panel enable constant airflow, facilitating optimal cooling for the active equipment with utmost efficiency.

### FEATURES

- ✓ 1U overall with ½ RU individual trays
- ✓ Up to 96FO in LC on 1U Space
- ✓ Standard 19" or 21" Rack mounting type
- ✓ High durability & light weight PC & PC+Fiber Glass material
- ✓ Transparent lid for easier maintenance and verification
- ✓ Enhanced labelling on the front door providing patch cords protection and better identification
- ✓ Available in shuttered dust proof LC adapters
- ✓ Available in standard SM and MM options
- ✓ Simple and easy installation with integrated fiber routing
- ✓ Right or Left Hinged Swing-out

## APPLICATIONS

- ✓ Indoor Applications
- ✓ Datacenter & Enterprise network
- ✓ Ethernet, Fiber Channel, ATM, LAN, MAN and WAN
- ✓ Data communication and Telecommunication networks

## PANEL SPECIFICATIONS

Parameters	Value
<b>Mounting Type</b>	Rack 19" or 21"
<b>Opening Type</b>	Right or Left Hinge Swing-out - 120° degrees
<b>Access Type</b>	Front and Side access
<b>Front Cable Management</b>	Front manager with Hinged transparent drop-down door
<b>Cable Entry Direction</b>	Side Cable Entry Left or Right
<b>Side Cable Management</b>	Each tray supports up to 6 MPO Trunks of 3mm
<b>Front Adapter Type</b>	LC Duplex Footprint
<b>Number of LC Adapters</b>	48 Ports [2x (24 each ½ RU tray)]
<b>Inside Adapter Type</b>	MTP®/MPO Base-8 Male (Pinned)
<b>Number of MTP®/MPO Adapters</b>	12 Ports [2x (6 each ½ RU tray)] for LC Configuration
<b>Fiber Capacity</b>	96FO in LC
<b>Height Unit</b>	1U
<b>Dimensions (W x D x H in MM)</b>	421.5 x 265.1 x 43.5 mm
<b>Material</b>	PC & PC + Fiber Glass (20%)
<b>Housing Color</b>	Black or Grey (RAL 7035)
<b>Compliance</b>	RoHS, REACH SvHC
<b>Application</b>	Indoor IP20
<b>Lockable</b>	No
<b>Net Weight</b>	2.5 Kg

**MPO-LC FANOUT SPECIFICATIONS**

Parameters	Units	SM MPO	SM LC	MM MPO	MM LC
Avg/Max IL – Standard	dB	≤ 0.25/0.75	≤ 0.20/0.30	≤ 0.60	≤ 0.18/0.30
Return Loss (PC/APC)	dB	≥ 60	≥ 60/65	NA	NA
Avg/Max IL– Premium	dB	≤ 0.10/0.35	≤ 0.12/0.15	≤ 0.10/0.35	≤ 0.12/0.15
Return Loss (PC/APC)	dB	≥ 60	≥ 60/65	NA	NA

**ORDER INFORMATION**

Part Number	Product Description
<b>PIVM01QR</b>	1U 96FO Pivot Patch Panel, 12x MPO(Male) Elite (Base-8) - LC Duplex SM OS2 (40G-10G) Right Bracket
<b>PIVM01QL</b>	1U 96FO Pivot Patch Panel, 12x MPO(Male) Elite (Base-8) - LC Duplex SM OS2 (40G-10G) Left Bracket
<b>PIVM02QR</b>	1U 96FO Pivot Patch Panel, 12x MPO(Male) Elite (Base-8) - LC/APC Duplex SM OS2 (40G-10G) Right Bracket
<b>PIVM02QL</b>	1U 96FO Pivot Patch Panel, 12x MPO(Male) Elite (Base-8) - LC/APC Duplex SM OS2 (40G-10G) Left Bracket
<b>PIVM03QR</b>	1U 96FO Pivot Patch Panel, 12x MPO(Male) Elite (Base-8) - LC Duplex MM OM3/OM4 (40G-10G) Right Bracket
<b>PIVM03QL</b>	1U 96FO Pivot Patch Panel, 12x MPO(Male) Elite (Base-8) - LC Duplex MM OM3/OM4 (40G-10G) Left Bracket

\* Add 'G' at the end of the Part Number for Telecom panels in Grey color. (Example: PIVM01QR**G**, PIVM01QL**G**)

TECHNICAL DRAWING

