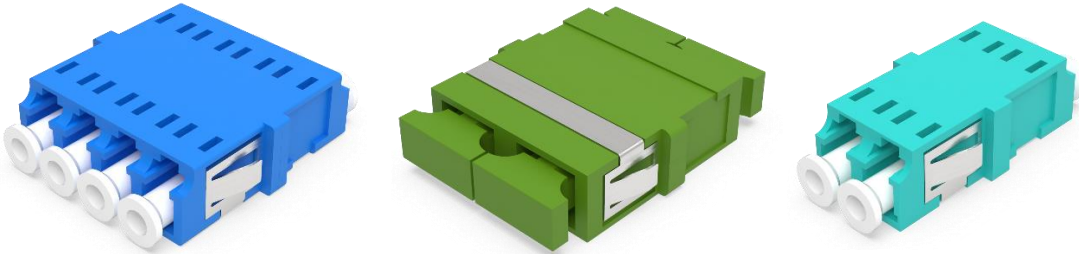


## FIBER OPTIC ADAPTER



Browse on Mobile

 [Browse on Web](#)

NEXCONEC Fiber Optic Adaptors are a range of high-quality adaptors which have high precision alignment sleeves for high reliability and better repeatability. The housing is available in different colors (for SC and LC only) and with options for flange or flangeless body and metal clips.

### FEATURES

- ✓ Complies with IEC , TIA and Telcordia standards
- ✓ High precision alignment sleeve
- ✓ Low insertion loss and high repeatability
- ✓ ROHS, REACH SvHC compliant

### APPLICATIONS

- ✓ Telecommunications networks
- ✓ CATV, LAN, MAN, and WAN application
- ✓ Fiber-to-the-home
- ✓ Premises distribution

## SPECIFICATIONS

ADAPTER CHARACTERISTICS		
Parameter	Value	Standard
Insertion Loss (typical)	0.2dB	IEC 61300-3-4
Mating Durability	500	IEC 61300-3-4
Operating Temp.	-25 ~ +70 C	IEC 61300-2-22

## ORDER INFORMATION

AA	1	2	3	4	5
----	---	---	---	---	---

AA	1	ADAPTER CONFIG	2	TYPE	3	FIBER PORT	4	Flange (ONLY SC/LC)	5	HOUSING COLOR (ONLY SC/LC)
	S1	SC	S	Single mode	S	Simplex	F	flange	L	Blue
	S2	SCA	M	Multimode	D	Duplex	N	no flange	N	Green
	L1	LC			Q	Quad			E	Beige
	L2	LCA							Q	Aqua
	F1	FC							V	Erica Violet
	F2	FCA								
	T1	ST								
	E1	E2000								
	E2	E2000A								