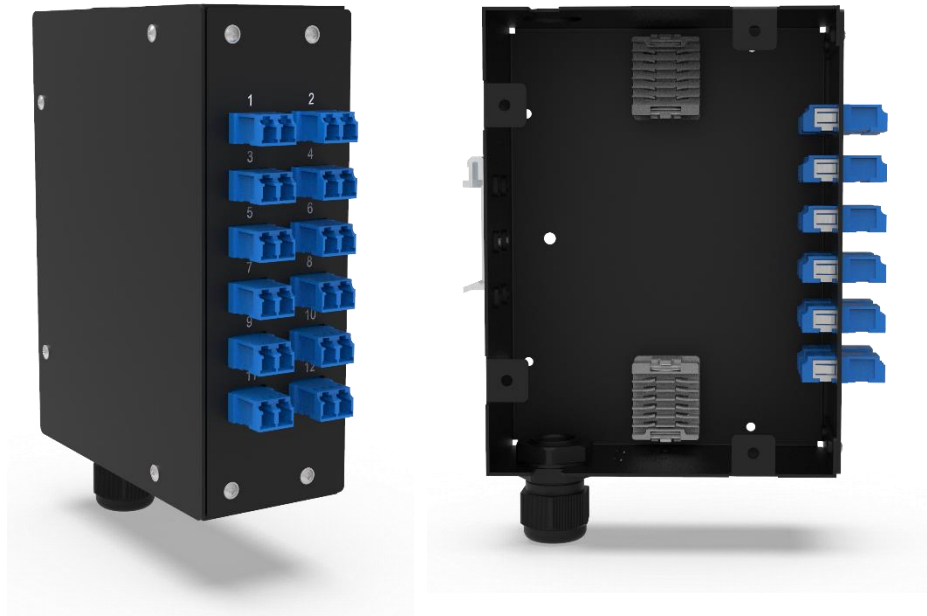


MINI DIN RAIL MOUNTED BOX - **FD01**



Browse on Mobile

 [Browse on Web](#)

Nexconec compact & low-profile modular DIN RAIL MODULAR BOX is designed for use in a wide range of industrial applications. Accepts up to 24 fibers in LC configuration or 6 copper keystones jacks. Modular small factor box for multi-application with MPO System, Pre-terminated cables or conventional splicing.

FEATURES

- ✓ Accommodates up to 24FO in LC and 12 in SC
- ✓ Fusion splicing, pre-terminated loose tube and tight buffered cables.
- ✓ MTP/MPO Pre-terminated cabling solution.
- ✓ Top and Bottom cable entries
- ✓ 6 Copper jacks patch panel option

APPLICATIONS

- ✓ FTTX Deployment & Enterprise network
- ✓ Industrial, Power system and control
- ✓ Rail signaling and control networks

SPECIFICATIONS

Mounting Type	Din Rail
Material	Cold rolled steel
Housing Color	Black
Application	Indoor IP20
Dimensions (W x D x H in MM)	48 x 123.20 x 162
Net Weight	1.20Kg

DESIGN - HARDWARE

Opening Type	Side Wall Screws
Cable Entry Direction	Top and Bottom
Splicing Capacity	24 in LC / 12 in SC
Splice Holder	40MM Heat shrink sleeves, Available in Crimp Style or Ribbon
Copper Capacity	6 ports keystone jacks

ORDER INFORMATION





FD01	1	2	3	4	5
-------------	----------	----------	----------	----------	----------

1	Type	2	Adapter Type	3	Fiber Count	4	Adapter Type	5	Pigtails
SP	Splicing	S1	SC	4	4FO	S	Singlemode	-	No Pigtails / Leave blank
MP	MPO/MTP Preterm	S2	SC/APC	6	6FO	M	Multimode	A1	SM OS2 G657A1
CO	Copper	L1	LC	8	8FO			O1	MM OM1
		L2	LC/APC	12	12FO			O3	MM OM3
				24*	24FO			O4	MM OM4

* Only with Splicing module

* Only with LC

APPLICATION

Splicing	FC/ST Box
	
MTP/MPO Pre-terminated	Copper
	

TECHNICAL DRAWING

